



TK International
020 7794 8700
www.t-k.co.uk

Residential Sales
Residential Lettings
Property Management

Sales Office:
9 Heath Street
Hampstead
London NW3 6TP
E: sales@t-k.co.uk

Lettings Office:
16-18 Heath Street
Hampstead
London NW3 6TE
E: lettings@t-k.co.uk

tk.international
@tk_int
TK International
TK International

Est.
1998



Keats Grove Hampstead NW3

Rare for Hampstead, a detached character house, discretely set back from the road, on an island site nestled between historic Keats Grove, Downshire Hill and South End Road.

The property is approached via a driveway providing parking for two / three cars, which leads to a meandering front paved garden with brick flower beds which in turn opens up to a southeast facing patio garden.

The internal accommodation is arranged over three storeys, with a kitchen/morning room to the front, a centrally located dining room and to the rear three steps lead down to a drawing room with a vaulted ceiling and arched French doors which lead out to an enchanting and secluded lawn garden.

The first floor offers a master bedroom suite including an en-suite bathroom and a second bedroom, with the second floor providing a studio room (which could easily revert to two bedrooms) and a bathroom. The house enjoys lovely views from the upper floors.

Conveniently located within walking distance of Hampstead Heath, Hampstead Heath Station and the wide choice of shops, cafes and restaurants in South End Green and Hampstead Village.

NB The site has great potential to be extended or redeveloped, subject to the usual consents.

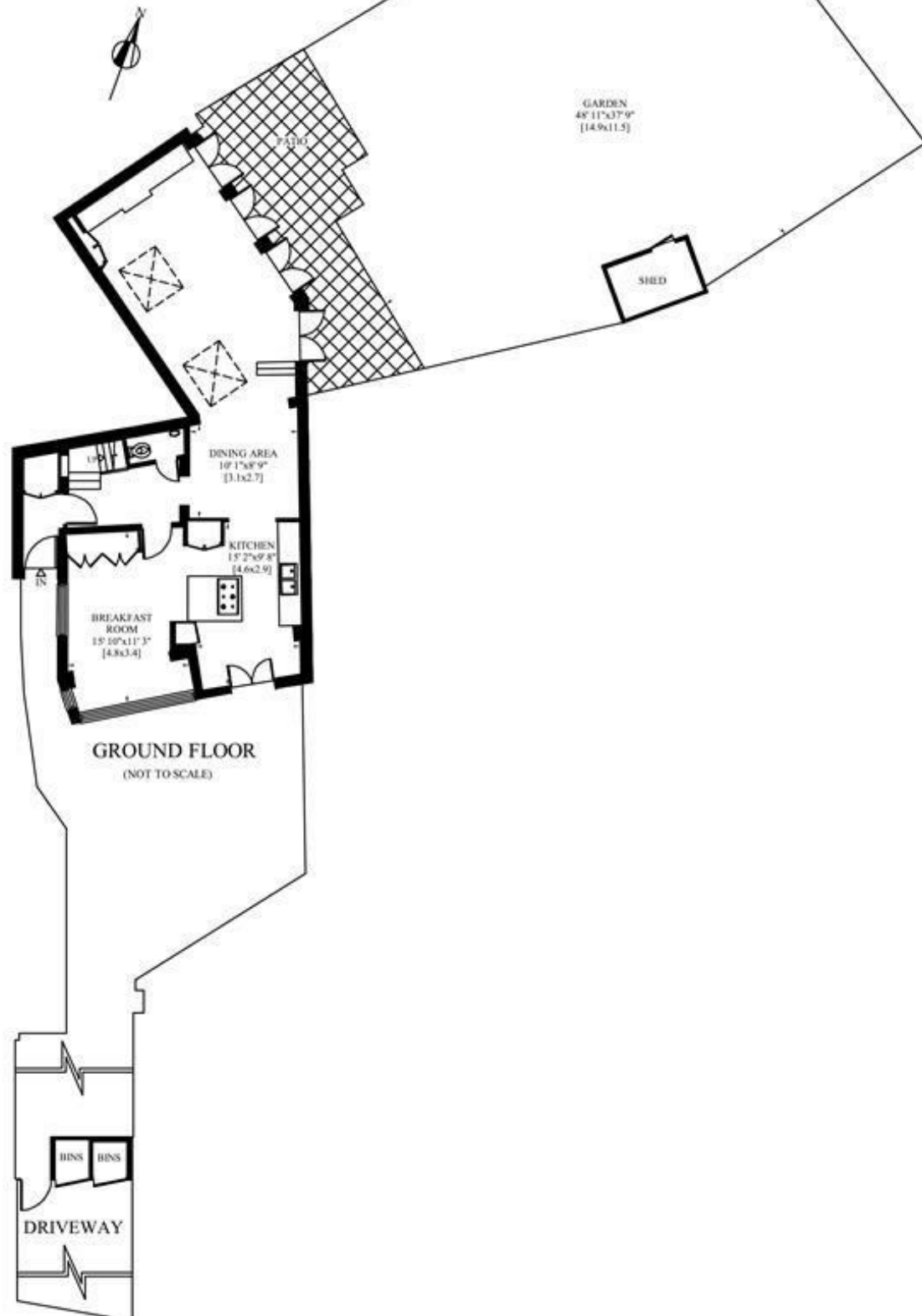
£4,000,000

Freehold



KEATS GROVE
LONDON NW3

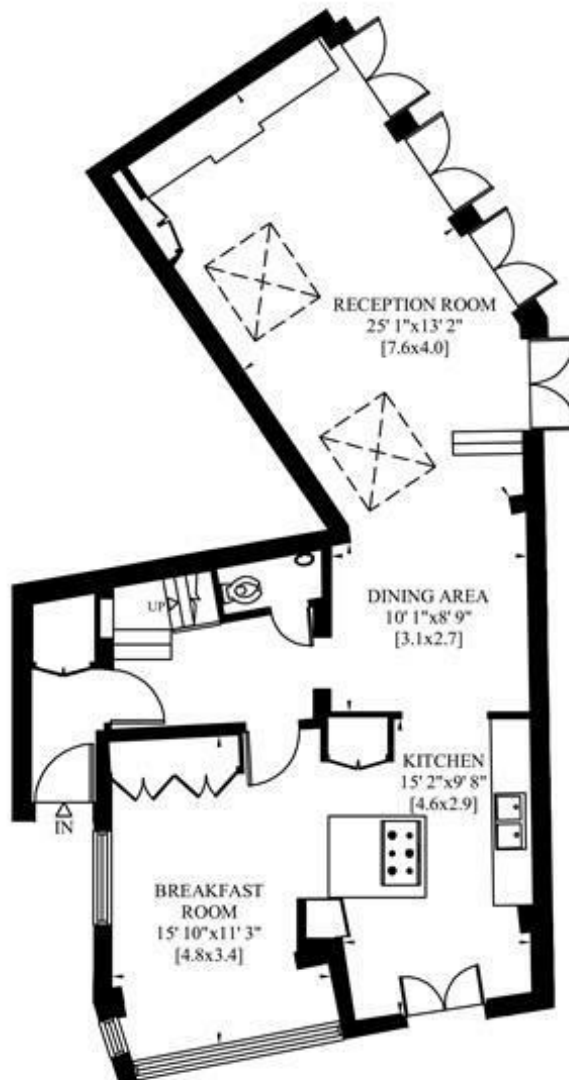
Gross Internal Area: 171 Sq. metres
Including Under 1.5m 1846 Sq.feet
Gross Internal Area: 162 Sq. metres
Excluding Under 1.5m 1744 Sq.feet



KEATS GROVE LONDON NW3

Gross Internal Area: 171 Sq. metres
Including Under 1.5m 1846 Sq. feet

Gross Internal Area: 162 Sq. metres
Excluding Under 1.5m 1744 Sq. feet

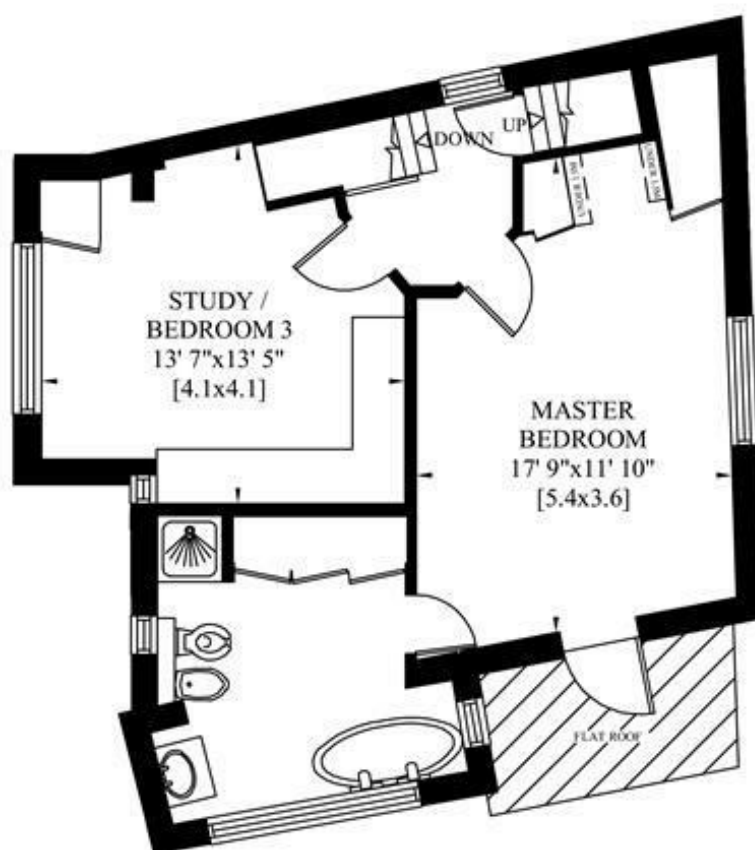


GROUND FLOOR
(NOT TO SCALE)

KEATS GROVE LONDON NW3

Gross Internal Area: 171 Sq. metres
Including Under 1.5m 1846 Sq.feet

Gross Internal Area: 162 Sq. metres
Excluding Under 1.5m 1744 Sq.feet

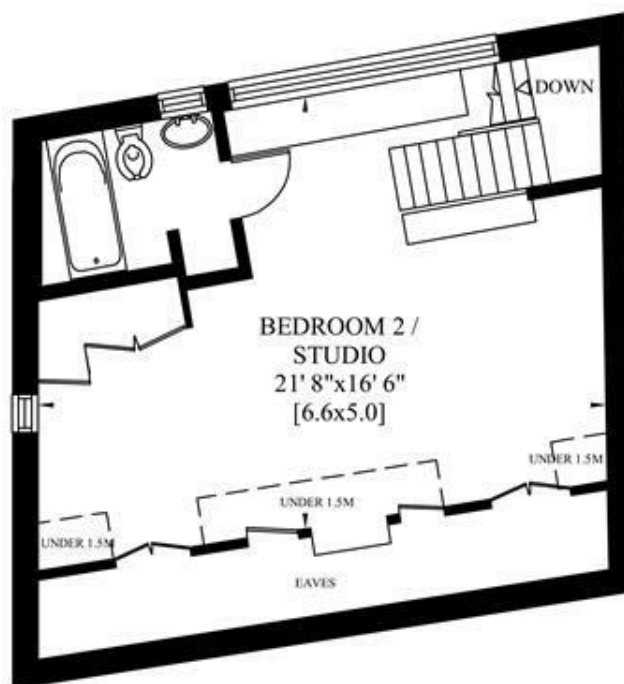


FIRST FLOOR
(NOT TO SCALE)

KEATS GROVE LONDON NW3

Gross Internal Area: 171 Sq. metres
Including Under 1.5m 1846 Sq.feet

Gross Internal Area: 162 Sq. metres
Excluding Under 1.5m 1744 Sq.feet



SECOND FLOOR (NOT TO SCALE)